



*NEVER JUST STAY. STAY INSPIRED.*

CONRAD®

ABU DHABI  
ETIHAD TOWERS

# WELCOME TO CONRAD ABU DHABI ETIHAD TOWERS

A standing testimony to dramatic sculptural forms and spectacular design, Conrad Abu Dhabi Etihad Towers sets the scale for unprecedented luxury experiences in Abu Dhabi. This iconic 305-meter-tall beachfront hotel is part of the five tower Etihad Towers complex, offering exceptional design-led rooms, suites and serviced residences, unique conference and meeting facilities and 12 impressive culinary experiences.



## AT A GLANCE

Bordered by the sea on one side and the fashionable Corniche on the other, the hotel is easily accessible from the airport (37 kilometres) and is within minutes of the city's most exclusive shopping malls, the central business district and Ministries' Area.

- Impressive 66-story hotel
- Grand panoramic lobby experience
- 377 uniquely designed, spacious and elegant rooms and suites
- 199 well-appointed fully furnished residences
- Stunning 1,920sqm Mezzoon ballroom and 13 meeting rooms
- 1,465sqm Conrad Spa of which 115sqm a relaxation area
- 12 contemporary dining venues
- The highest vantage point in Abu Dhabi from Observation Deck at 300
- Three large outdoor pools
- Private beach
- Valet parking service and underground car park space

## SERVICED RESIDENCES

Experience the ultimate in luxury in each of our 199 inspirationally designed and fully serviced residences – from intimately appointed studios to expansive three bedroom apartments.

- Floor-to-ceiling windows with ocean views
- Bose home entertainment system
- Fully-equipped kitchen
- One or two bathrooms
- Underground parking space

### APARTMENT TYPES

|                                       |    |
|---------------------------------------|----|
| Studio with Sea View                  | 60 |
| One Bedroom Apartment with Sea View   | 57 |
| Two Bedroom Apartment with Sea View   | 78 |
| Three Bedroom Apartment with Sea View | 4  |

## GUEST ROOMS + SUITES

Conrad Abu Dhabi Etihad Towers features 377 uniquely designed, spacious and elegant rooms and suites, offering fully integrated lifestyle technology. The interior design for accommodation complements the sleek, iconic form of the architecture.

### ROOM TYPES

|                                   |     |
|-----------------------------------|-----|
| Superior Room with Sea View       | 6   |
| Superior Queen Room with Sea View | 24  |
| Deluxe Room with Sea View         | 150 |
| Premier Room with Sea View        | 11  |
| Grand Premier Room with Sea View  | 84  |
| Executive Room with Sea View      | 38  |
| Junior Suite with Sea View        | 35  |
| Deluxe Family Room with Sea View  | 4   |
| Premier Family Room with Sea View | 6   |
| Etihad Suite with Sea View        | 16  |
| Sky Suite with Sea View           | 1   |
| Tower Suite with Sea View         | 1   |
| Royal Etihad Suite with Sea View  | 1   |

## HEALTH + FITNESS

Discover tranquility and serenity at Conrad Spa Etihad Towers. This luxurious retreat experience enchants you to a healing, serene state of mind and body with myriad treatments in 13 spa rooms. The private beach, three swimming pools, and Conrad Fitness provide ultimate relaxation.

- 13 private treatment rooms, including a Rasoul chamber
- A Hammam suite
- Steam rooms
- Retail area with top quality spa products
- Three outdoor swimming pools
- Private beach
- State-of-art Conrad Fitness offering TechnoGym® equipment



## CITY ATTRACTIONS

A leisurely stroll along the Abu Dhabi Corniche is one of the best things to do when you travel to Abu Dhabi. This seaside boardwalk is 4 miles long. The walkways are paved and dotted with benches, gardens and amazing views of the Arabian Gulf.

Take a trip into the capital and explore the many leisure and entertainment attractions and numerous shopping malls including the historic Sheikh Zayed Grand Mosque and Louvre Museum.

Visit Observation Deck at 300 for a bird-eye perspective of the capital's attractions, it is unforgettable experience. They are within close proximity of the hotel that should be in every visitor must-visit list.

- UAE Presidential Palace
- The Founder's Memorial
- Marina Mall
- Marina Eye
- Emirates Heritage Village
- World Trade Center Abu Dhabi
- Qasr Al Hosn Fort

Heading back to the hotel, Avenue at Etihad Towers makes a great boutique destination with a variety of high-end retailers and gourmet dining options, confirming Abu Dhabi as a destination for world class shopping.



## LOCATION

Bordered by the sea on one side and the fashionable Corniche on the other, the hotel is easily accessible from the airport (37 kilometres) and is within minutes of the city's most exclusive shopping malls, the central business district and Ministries' Area.



## R E S T A U R A N T S + B A R S

Experience genuine hospitality and personalised service, enhanced by sweeping views of the capital's coastline. Savour a diverse variety of culinary experiences across 12 exquisite restaurants and bars.

### SOLE



Discover traditional Italian dining within authentic surrounds. SOLE offers the exceptional combination of a delicious mix of modern and traditional cuisine for lunch and dinner served in a stylish location.

### LI BEIRUT



The classic Lebanese cuisine is taken to a new realm of artistry through the utilisation of modern cooking styles and refined arrangements. Additionally, the expansive terrace seating offers stunning sea views.

### NAHAAM



A casual, yet chic poolside restaurant, Nahaam, offers a carefully curated menu of classic favourites, ranging from sandwiches and burgers to salads and shakes. The al fresco dining option and the modern vibe make it the perfect choice for a quick lunch or snack.

### TORI NO SU



Tori No Su is a chic and award-winning Japanese restaurant in Abu Dhabi, with a contemporary and innovative menu. From a versatile sushi bar to exotic dishes from the Teppanyaki Grill, Tori No Su curates the best of Japanese cuisine, offering authentic and traditional dishes.

### VAKAVA



Experience all the fiery passion of Latin America with every dish, conversation and rhythm. Introducing VaKaVa - Pan Latin Grill and Lounge, where vibe and flavour come together to set your soul ablaze.

### ROSEWATER



The buffet at Rosewater offers a variety of global flavours and a live cooking station where each dish is prepared by expert chefs. The outdoor terrace with the sea view makes every meal more enjoyable.

## RESTAURANTS + BARS

### LOBBY LOUNGE



With its high ceiling, dramatic sculptural forms and spectacular chandeliers, the Lobby Lounge offers a stunning ambience. Its impressive appearance invites guests to unwind with a selection of light refreshments and pastries along with artistic creations from the cake counter.

### OBSERVATION DECK AT 300



Located on the 74th floor, the Observation Deck at 300 provides a 360° view of Abu Dhabi's splendid skyline. Stop by for some Afternoon Tea or mocktails, accompanied by lip-smacking nibbles.

### LE PETIT CHEF AT RAY'S GRILL



An Immersive Culinary Journey with 3D Visuals. Experience the best of theatre and dining in an immersive culinary one-and-a-half-hour journey following Le Petit Chef, the world's smallest chef!

### RAY'S BAR



Innovative cocktails and refreshing beverages along with bar menu enhanced by the amazing tunes and chic ambience make Ray's Bar the perfect spot for a night out, complemented with stunning views from Level 62.

### LILLET POOL BAR



Enjoy the beautiful Abu Dhabi sunset as you lounge around the Pool Bar and sample a drink with an assortment of light bites.

### LOBBY BAR



An intimate venue where guests can enjoy an extensive selection of beverages and light refreshments.

## M E E T I N G S + E V E N T S

**With one of the largest conference centres in the capital, Conrad Abu Dhabi Etihad Towers offers a distinct selection of spaces for you to choose from.**

**13 Meeting Rooms** | Located on Podium Level 4, each venue is flexible to provide the ideal setting for corporate meetings, gatherings, exhibitions, product launches and even weddings. The large pre-function area overlooking the ocean catering for up to 400 guests allows for a set-up that best suits your requirements or hold a cocktail party.

**Mezzoon Ballroom** | Occupying 1,920 square metres, this richly decorated space enhances every occasion. Perfect for grand gatherings, the ballroom accommodates up to 1,000 guests and can be divided into four separate and fully functional sections with different set-ups, providing more flexibility when hosting a function.

- Large pre-function area with ocean views
- Business facilities serviced by multilingual staff
- Bridal Suite
- Chairman Suite
- Cutting-edge event Audio Visual technology
- On-site technical team



# MEETING CAPACITIES

| Venue                    | Dimensions   |             |                  |        | Capacities |               |           |         |            |         |     |            |     |
|--------------------------|--------------|-------------|------------------|--------|------------|---------------|-----------|---------|------------|---------|-----|------------|-----|
|                          | Area (Sq.ft) | Are (Sq.Mt) | Length x Width m | Height | Reception  | Lunch/ Dinner | Cabaret   | Theatre | Class room | U-Shape |     | Board Room |     |
| Pre-function Area 1 to 4 | 3,445        | 320         | 12x12m           | 4.5m   | N/A        | N/A           | N/A       | N/A     | N/A        | N/A     |     | N/A        |     |
| MR- 1                    | 1,550        | 144         | 12x12m           | 4.5m   | 18         | 40            | 4 Tables  | 32      | 32         | 8       | 8   | 10         | 10  |
| MR-2                     | 1,550        | 144         | 12x12m           | 4.5m   | 18         | 40            | 4 Tables  | 32      | 32         | 8       | 8   | 10         | 10  |
| MR-3                     | 1,550        | 144         | 12x12m           | 4.5m   | 18         | 40            | 4 Tables  | 32      | 32         | 8       | 8   | 10         | 10  |
| MR-4                     | 1,550        | 144         | 12x12m           | 4.5m   | 18         | 40            | 4 Tables  | 32      | 32         | 8       | 8   | 10         | 10  |
| MR- 1 & 2                | 3,100        | 288         | 24x24m           | 4.5m   | 36         | 80            | 8 Tables  | 64      | 64         | 16      | 16  | N/A        | N/A |
| MR-1,2 & 3               | 4,650        | 432         | 36x36m           | 4.5m   | 54         | 120           | 12 Tables | 96      | 96         | 24      | 24  | N/A        | N/A |
| MR-2,3 & 4               | 4,650        | 432         | 24x36m           | 4.5m   | 54         | 120           | 12 Tables | 96      | 96         | 24      | 24  | N/A        | N/A |
| MR-1 to 4                | 6,200        | 720         | 48x48m           | 4.5m   | 72         | 160           | 16 Tables | 128     | 128        | 32      | 32  | N/A        | N/A |
| MR-5                     | 1,387        | 128         | 6x8m             | 4.5m   | 12         | 30            | 3 Tables  | 12      | 12         | 7       | 7   | 4          | 4   |
| MR-6                     | 1,033        | 96          | 6x8m             | 4.5m   | 8          | 20            | 2 Tables  | 8       | 8          | 6       | 6   | 4          | 4   |
| MR-7                     | 823          | 77          | 8.5x8m           | 4.5m   | 8          | 20            | 2 Tables  | 12      | 8          | 6       | 6   | 4          | 4   |
| MR-8                     | 823          | 77          | 8.5x8m           | 4.5m   | 8          | 20            | 2 Tables  | 8       | 8          | 6       | 6   | 4          | 4   |
| MR-9                     | 640          | 60          | 7x8.5m           | 4.5m   | 8          | 20            | 2 Tables  | 12      | 8          | 6       | 6   | 4          | 4   |
| MR-10                    | 832          | 77          | 5.8x11m          | 4.5m   | 12         | 20            | 2 Tables  | 16      | 12         | 7       | 7   | 6          | 6   |
| MR-5 & 6                 | 2,420        | 224         | 12x16m           | 4.5m   | 20         | 50            | 5 Tables  | 20      | 20         | 13      | 13  | 10         | 10  |
| MR-7 & 8                 | 1,646        | 154         | 17x17m           | 4.5m   | 16         | 40            | 4 Tables  | 20      | 20         | 12      | 12  | 8          | 8   |
| MR- 9 & 10               | 1,463        | 137         | 12.5x20m         | 4.5m   | 16         | 50            | 5 Tables  | 20      | 24         | 13      | 13  | 8          | 8   |
| Pre-Function Area        | 3,230        | 300         |                  | 6m     | 40         | N/A           | N/A       | N/A     | N/A        | N/A     | N/A | N/A        | N/A |
| MR-11                    | 457          | 43          | 5m               | 4.5m   | N/A        | N/A           | N/A       | N/A     | N/A        | N/A     | N/A | N/A        | N/A |
| MR-12                    | 457          | 43          | 5x4.5m           | 4.5m   | 6          | 4             | 1 Table   | 8       | 8          | 3       | 3   | 6          | 6   |
| MR-13                    | 457          | 43          | 5x4.5m           | 4.5m   | 6          | 6             | 1 Table   | 8       | 8          | 3       | 3   | 6          | 6   |
| MR-12 & 13               | 914          | 46          | 10x4.5m          | 9m     | 12         | 8             | 2 Tables  | 16      | 16         | 6       | 6   | 12         | 12  |
| Chairman's Suite         |              |             |                  |        | N/A        | N/A           | N/A       | N/A     | N/A        | N/A     | N/A | N/A        | N/A |

| Venue             | Dimensions   |             |                    |        | Capacities |               |           |         |           |                                     |     |
|-------------------|--------------|-------------|--------------------|--------|------------|---------------|-----------|---------|-----------|-------------------------------------|-----|
|                   | Area (Sq.ft) | Are (Sq.Mt) | Length x Width (m) | Height | Reception  | Lunch/ Dinner | Cabaret   | Theatre | Classroom | U-Shape<br>Black Leather/ BQT Chair |     |
| BR-1              | 5,070        | 471         | 30.6x15m           | 8.5m   | 80         | 120           | 12 Tables | 80      | 120       | 22                                  | 22  |
| BR-2              | 4,973        | 462         | 30.6x15m           | 8.5m   | 80         | 120           | 12 Tables | 80      | 120       | 22                                  | 22  |
| BR-3              | 4,973        | 462         | 30.6x15m           | 8.5m   | 80         | 120           | 12 Tables | 80      | 120       | 22                                  | 22  |
| BR-4              | 5,070        | 462         | 30.6x15m           | 8.5m   | 80         | 120           | 12 Tables | 80      | 120       | 22                                  | 22  |
| BR- 1 & 2         | 10,043       | 471         | 61.2x30m           | 8.5m   | 160        | 240           | 24 Tables | 160     | 240       | 44                                  | 44  |
| BR 1,2 & 3        | 15,016       | 1,395       | 91.8X45m           | 8.5m   | 240        | 360           | 36 Tables | 240     | 360       | N/A                                 | N/A |
| BR-1 to 4         | 20,086       | 1,866       | 122.4x60m          | 8.5m   | 320        | 480           | 48 Tables | 320     | 480       | N/A                                 | N/A |
| Pre-Function Area | 19,375       | 1,800       |                    |        | N/A        |               | N/A       | N/A     | N/A       | N/A                                 | N/A |

Covid-19:

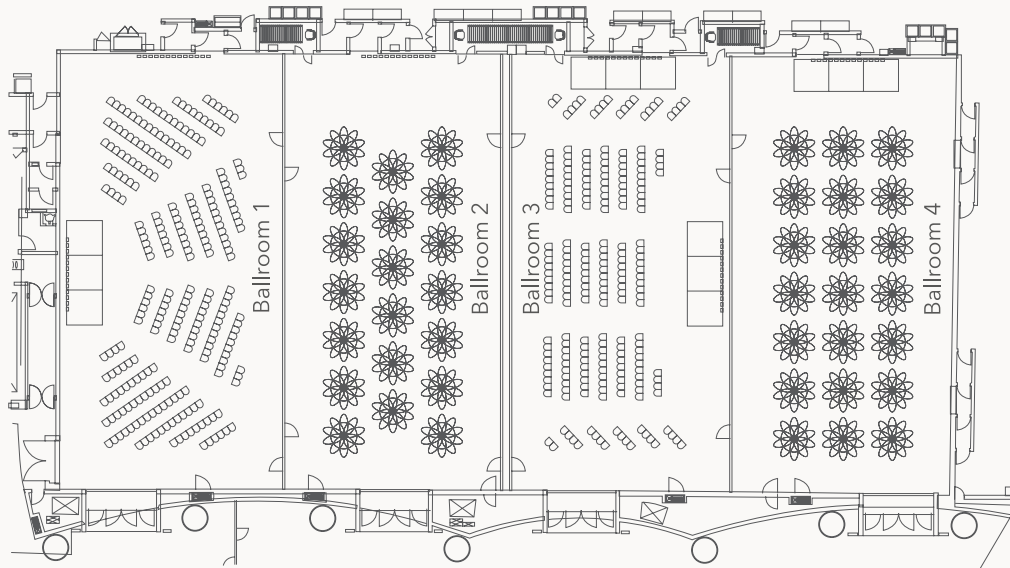
\*Capacity and measurements for each room:

- ✓ Seating capacity for plated Lunch & Dinner
- ✓ U Shape capacity for Lunch & Dinner
- ✓ Board Room capacity for Lunch & Dinner
- ✓ Seating capacity for numbers listed above is started with no stage or additional audio equipment for Meeting rooms
- ✓ Seating capacity for numbers listed above is started with space for stage but no additional audio equipment for ballrooms
- ✓ Seating gap 2 meters gap in the tables
- ✓ Cabaret set up allow up to 8 guests per table
- ✓ Dinner round table set up considered 10 guests per table
- ✓ Classroom set up considered 2 guests per table

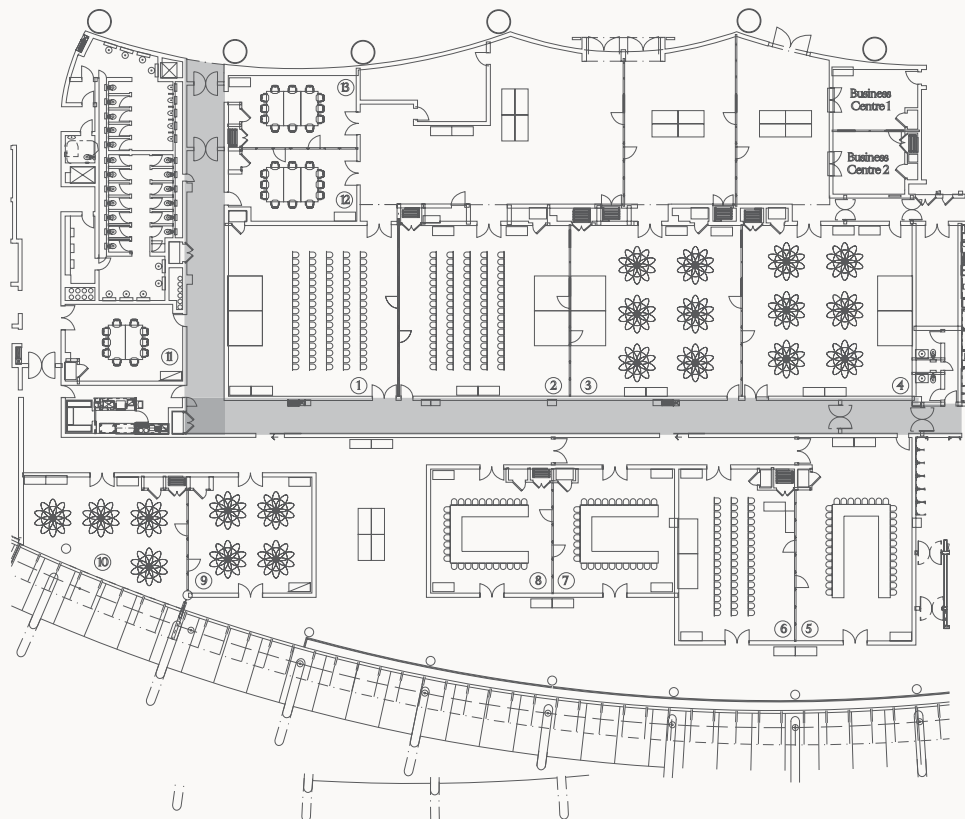
| Built-In Screen Sizes for the Meeting Rooms and Ballroom |                 | Stage Pieces & Dance Floor |                      | VIP Chairs & VIP Coffee Tables |                |
|--|-----------------|----------------------------|----------------------|--------------------------------|----------------|
| Room Name  | Size            | Stage                      | Size                 | VIP Tables                     | Size           |
| Meeting Room 1-10  | 1.75x2.8m (HxW) | 15 Pieces                  | Height – 60 cm/80 cm | Marble – 18 pieces             | Height – 63cm  |
| Meeting Room 12-13                                       | 1.27x2.0m (HxW) |                            | Length - 2.4m        |                                | Length – 80 cm |
| Ballroom   | 3.0mx5.38 (HxW) |                            | Width - 1.2m         |                                | Width – 80cm   |
|  |                 | Dance Floor                | Size                 | VIP Chairs                     | Size           |
|  |                 | 99 pieces                  | 1.22 Sq.M            | 100 pieces                     | Height – 94cm  |
|  |                 |                            |                      |                                | Width – 61cm   |

Note: 297cm is the approximate gap between the floor and the bottom of the screen.

## MEZZOON BALLROOM FLOOR PLAN



## MEETING ROOMS FLOOR PLAN



West Corniche, PO.Box 111929, Abu Dhabi, United Arab Emirates  
Tel. +971 2 811 5555 | Etihad Towers.Info@conradhotels.com  
abudhabietihadtowers.conradhotels.com